

Outdoor speaker systems that combine quality and durability, and provide a wide variety of installation options.



NS-AW392 (Black)



NS-AW592 (Black)

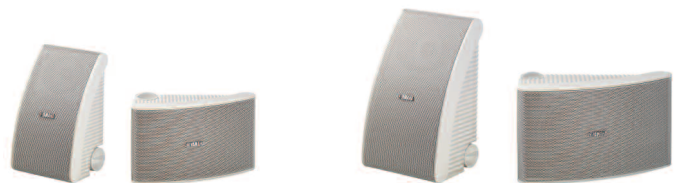
Premium Sound Quality and Design

- Yamaha's advanced speaker technology makes it possible to combine high sound quality with long-term durability
- Unique angled cabinet design blends in with external and interior décors
- Two-way acoustic suspension design
 - New waterproof woofer for accurate mid/low frequency response
 - Fluid-cooled, coated soft dome tweeter for clear high frequency sound
 - Waveguide and front baffle for wide sound dispersion
- High-grade weatherproof cabinets with special processing for drip, water and UV resistance
- Precise sound imaging supported by time-aligned woofer and tweeter placement

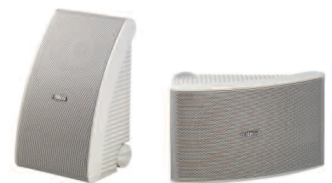
Convenient Features

- Flexible installation options with supplied mounting brackets
- Weather resistant 5-way binding post speaker terminals
- Powder-coated aluminum speaker grilles
- Supplied rubber feet for desktop/bookshelf placement
- Wide range of applications for home theaters, small commercial spaces and public buildings
- Three models to meet all types of application requirements

The NS-AW392, NS-AW592 and NS-AW992 are offered with black and white finish.



NS-AW392 (White)



NS-AW592 (White)



High Quality and Durability

Excellent Audio Performance

Yamaha drew on its long experience as a manufacturer of top quality HiFi speaker systems to develop these three all-weather models. We were able to make them extremely durable while still maintaining audio performance up to Yamaha standards. The woofer uses a highly responsive cone and a fluid-cooled soft dome tweeter, both specially processed for water resistance. The internal structure has been carefully designed for optimal time alignment between the two units, providing proper sound imaging. A waveguide and front baffle ensure good sound dispersion characteristics. Tonal clarity in all frequency ranges is excellent, with very low distortion.



New waterproof woofer and soft dome tweeter

All-Weather Construction

With a plastic cabinet and specially processed woofer and tweeter, these speakers will perform reliably when mounted outdoors. They are water resistant, and are not affected by sunlight (UV rays) or high or low temperatures.

Versatile Applications

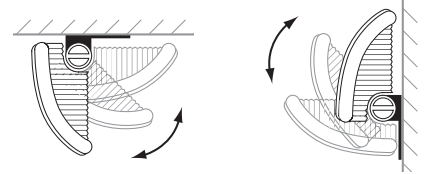
Designed primarily for use as outdoor speakers, they can add to the fun of backyard parties, supply background music on patios and decks or be mounted in or near the garage. They can be used indoors or outdoors at public facilities, as well as inside shops. And of course, they can also serve as surround speakers in home theater installations.

Professional Design

Various Installation Possibilities

The bracket that comes with each speaker can be adjusted in multiple ways, providing a wide variety of installation possibilities. On the wall, on the ceiling, on the floor, with either

end facing up, or even horizontally, with a 90° adjustment range. Virtually any way the customer wants to install them is possible.



Unique Cosmetic Design

The NS-AW392, NS-AW592 and NS-AW992 have a unique, appealing design that sets them apart from other outdoor speakers, most of which are box-shaped. Even though they stand out on their own, once you install them you'll find they nicely match the exterior or interior decor.



Main Specifications	NS-AW392	NS-AW592	NS-AW992
Type	2-way acoustic suspension	2-way acoustic suspension	2-way acoustic suspension
Woofer	5 1/4" waterproof cone	6 1/2" waterproof cone	8" waterproof cone
Tweeter	3/4" fluid-cooled, coated soft dome	1" fluid-cooled, coated soft dome	1" fluid-cooled, coated soft dome
Frequency Response	60 Hz-25 kHz	55 Hz-20 kHz	50 Hz-20 kHz
Nominal Input Power	40 W	50 W	60 W
Maximum Input Power	120 W	150 W	180 W
Sensitivity	86 dB/2.83 V/1 m	88 dB/2.83 V/1 m	90 dB/2.83 V/1 m
Crossover Frequencies	6 kHz	5 kHz	5 kHz
Waterproof Characteristics	IPx3	IPx3	IPx3
Cabinet	HIPS	HIPS	HIPS
Grille	Aluminum coated metal	Aluminum coated metal	Aluminum coated metal
Speaker Terminals	Waterproof, screw-type	Waterproof, screw-type	Waterproof, screw-type
Impedance	6 ohms	6 ohms	6 ohms
Dimensions (W x H x D)	6 3/4" x 10 3/4" x 5 3/8"	8 1/8" x 13 3/8" x 6 3/4"	9 1/8" x 15 1/4" x 8 1/4"
Weight	4 lbs. each	5.3 lbs. each	13.2 lbs. each

• Product designs and specifications are subject to change without notice. • NS-AW992 specifications are tentative.