



WIDEN YOUR VIEW. STRETCH YOUR DOLLAR.

If you're looking for a good deal, this affordable series of business projectors are your answer. Capable of producing an amazing beyond Full HD resolution* with up to 3,600 lumens, your images remain crystal clear even for large projections. On top of features such as built-in Wi-Fi**, home screen interface, and auto search function, a long lamp life and lasting maintenance cycle help you keep your business running smoothly and cost-efficiently.



Beyond Full HD Resolution*



10,000 Hours Lamp Life in Eco Mode



Multi-PC Projection



Horizontal Keystone Adjuster



HDMI



Split Screen



Environmentally-Friendly



EB-U32/W31/X36/X31/S31



EB-U04/W04/X04/S04

ENGINEERED FOR BUSINESS

Impressive Image Quality

Witness large, quality images with beyond Full HD resolution* and 3,600 lumens of brightness.

Seamless Connectivity and Usability

Enjoy great convenience from ergonomic features ranging from split screen functionality to Epson iProjection.

Essential Cost-savings

Minimise costs with an impressive 10,000 hours for lamp life and maintenance cycle in eco-mode.



With ergonomic features such as auto-power on and source search, these projectors deliver smooth and high-contrast presentations whenever and wherever you need. Enjoy superb high-resolution image display of 1920 x 1200 that are beyond Full HD resolution.



Impressive Image Quality

Incredible Beyond Full HD Resolution*

Deliver a dynamic viewing experience with WUXGA 1920 x 1200 resolution image display without distortion in Video, Blu-ray and other graphic-intensive media. The projection images remain razor sharp and vivid, even on larger screens.

High Contrast Ratio

Add brilliance to your presentations. Boasting stunning brightness of up to 3,600 lumens and a high contrast ratio of 15000:1, these projectors enable you to project beautiful, well-defined images wherever you are, regardless of ambient light.



* Applicable for EB-U32 and EB-U04 only.

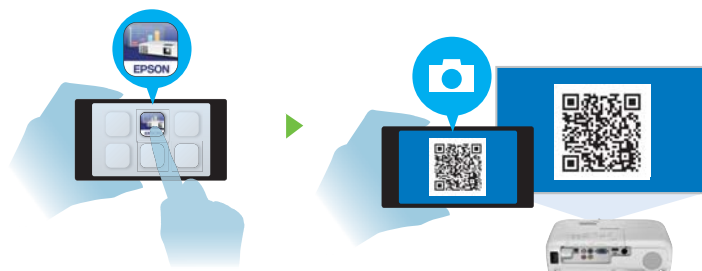
Seamless Connectivity and Usability

Epson iProjection*

The iProjection application enables a wireless connection for projecting images and files from your smart devices. The "QR Code Reader" function makes this wireless connection even easier by simply reading the QR code that is projected on the screen from your smart devices.

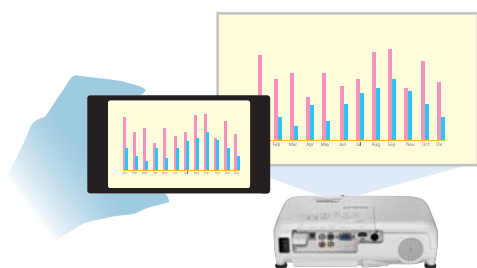


* In iProjection, projector profile search, multi-screen display, distribution function, audio transfer, movie file transfer, interrupt connection disabling and encryption data transfer capabilities are not supported.



Open the iProjection in your smart device

Scan the QR code on the projection screen



Project the contents from your smart device wirelessly on the projection screen

Horizontal Keystone Adjuster

Deliver powerful presentations anywhere in the room. The easy-to-use sliding Horizontal Keystone Adjuster means screen corrections can be done quickly, easily and accurately, even in a limited space.

And with automatic vertical keystone detection and adjustment, there is no longer any need for awkward and time-consuming manual image adjustments that interrupt the smooth flow of your presentation delivery. This handy feature automatically detects the projector's vertical keystone distortion and corrects it instantly.



Wide-ranging Connectivity

Advanced connectivity features mean convenient and hassle-free projections for your presentations. With a wide-ranging interface, you can choose from a variety of connection methods including HDMI, VGA and LAN. In addition, the EB-U04 and EB-U32 are equipped with two HDMI ports, one of which is MHL-enabled, for greater digital compatibility.

Simply connect your MHL-compatible device with the MHL cable to fully enjoy your contents on the big screen. What's more, when connected, you can charge your smart device and operate it using the projector's remote control.



2HDMI + MHL*

MHL
Mobile High-Definition Link

HDMI
HIGH-DEFINITION MULTIMEDIA INTERFACE

* Applicable for EB-U32 and EB-U04 only.

Wireless Transmission

Enjoy enhanced connectivity and flexibility with in-built Wi-Fi* connectivity. Easily share and transmit images, texts and files from your smart devices using the “Epson iProjection” application for smooth and smart projections.



* Applicable for EB-U32 only. For other models, wireless LAN adaptor ELPAP10 is required.

Multi-PC Projection

With the control of a host PC, up to 50 terminals can be connected via the multi-PC projection to a single projector. The host PC acts as a moderator, selecting media from up to four PCs or smart devices to be projected simultaneously. With the moderator function, you can maintain control and prevent tampering of what's projected on screen.



Auto Power On

With the auto power on function, projection starts automatically once a projection signal is detected via VGA cable, providing you with an easy and hassle-free presentation.



Auto Source Search

With automatic detection of the input source, projection automatically begins without you having to manually switch the input.



Split Screen

Display images from two different sources side by side on the same screen for a more effective presentation. In video conferences, for example, images of presentation materials and remote participants can be shown simultaneously.



Home Screen

View and access your most frequently used functions immediately on the home screen. See all source information at a glance, no matter what the source input. With all the information you need right there on the home screen, wireless connections have never been easier.



Redirected Exhaust

The front-facing exhaust is intelligently positioned to prevent anyone from being exposed to the hot exhaust, especially when on a narrow table. This allows your audience to fully concentrate on the presentation, even if they are seated beside or behind the projector.

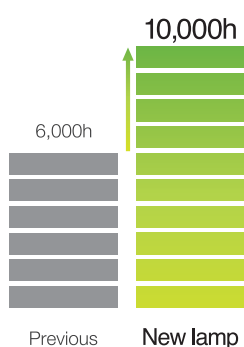


Other projectors with side exhaust

Essential Cost-savings

Longer Lamp Life

With a long lamp life of 10,000 hours in eco-mode, the frequency of costly lamp replacements is reduced, saving you time and money.



Air Filter

With a maintenance cycle of 10,000 hours in eco-mode, the need for regular maintenance of the air filter is minimised to save you time and money.

Easy Lamp Replacement

With the lamp cap located on the upper side of the projector, you can change lamps easily even if the projector is installed on the ceiling. Lamps can be replaced quickly without tools and dismantling of the projector from the ceiling mount.



Eco Features

- Uses just 0.26W of power in standby mode
- Projector optics employ lead-free lenses
- Unpainted plastic housing reduces the environment impact
- The flame retardants used in the plastic housing do not contain chlorine or bromine

Better Products for a Better Future™

For more information on Epson's environmental programmes, visit <http://global.epson.com/SR/environment>.

PARTNERS IN PERFECTION

Wireless LAN Adaptor ELPAP07



Supports 802.11 b/g/n connection
Compatible with all Epson wireless-enabled projectors

Ultra-portable Document Camera ELPDC06



Easily portable; 0.96kg / 2.11lbs
1.92 megapixels with 15fps
4 x digital zoom
USB powered

Ink Tank System Printer L365



Print Speed: Approx. 9.2ipm for default black and white prints
Resolution: 5760 x 1440dpi
Connectivity: Built-in WiFi, Epson Connect
Print, copy scan

SEE VIBRANT, REALISTIC COLOURS WITH HIGH COLOUR BRIGHTNESS.

A New Specification

Projectors have always had their brightness rated only for white light. However, they may have very different colour brightness levels. The colour brightness specification provides a new way for buyers to compare the holistic performance (white and colour light brightness) of projectors to make a more informed decision.



Epson
Colour Brightness 2600 Lumens
White Brightness 2600 Lumens

Competitor
Colour Brightness 750 Lumens
White Brightness 2700 Lumens

What is Colour Brightness?

As the term implies, colour brightness is a new international standard that states a projector's colour light output in lumens. It measures the brightness of a projector's red, green and blue light.

These are the measurements to look for:

Colour Brightness - Colour Light Output

White Brightness - White Light Output



Epson

Competitor

Why Does Colour Brightness Matter?

Even if a projector has high white brightness, it's colour brightness could be as low as 1/3 of its white light brightness specification. With a projector that has high colour brightness, you'll see vibrant, realistic colours; but if colour brightness is low, colours can look dull and dark, skin tones can be reproduced poorly and important details can be lost.

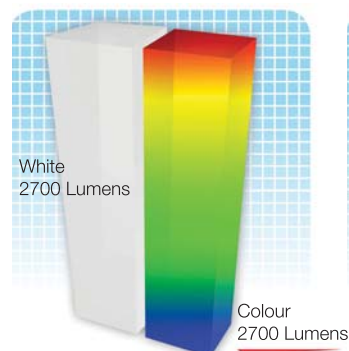


Epson

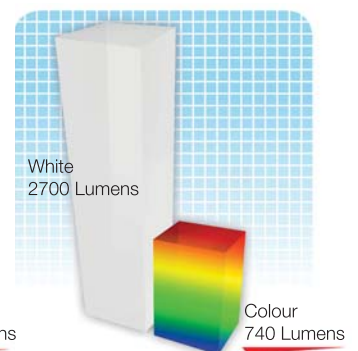
Competitor

How to Find a Projector's Colour Brightness?

1. Look for separate colour brightness and white brightness specification.
2. Projectors with similar white brightness levels can have vastly different and significantly lower colour brightness levels.
3. Many manufacturers may not want you to know their projectors are only 1/3 as bright when measuring colour.



Epson



Other 1-Chip Projectors

Up to
3X Brighter
Colours
with Epson® Projectors*
* See product specification notes at manufacturer's website.

www.epson.com.sg/colourbrightness

EPSON REVOLUTIONISES PROJECTOR MARKET WITH 3LCD TECHNOLOGY AND LEADS AS WORLD'S NO.1* PROJECTOR BRAND FOR 14 CONSECUTIVE YEARS!

* Based on independent research by Futuresource Consulting

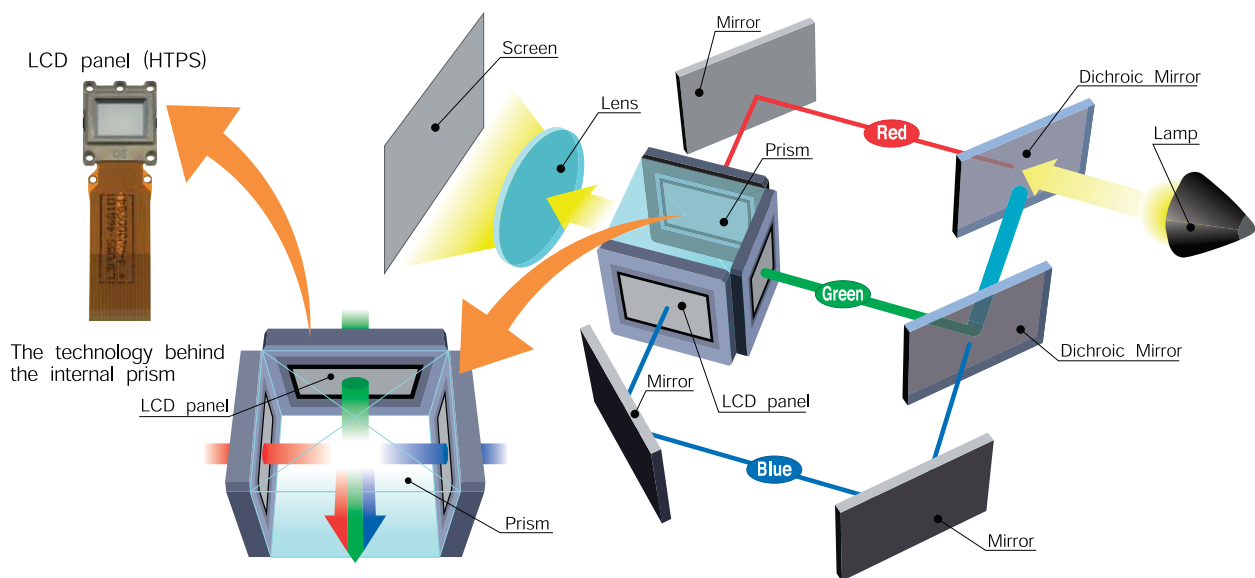
Advantages of 3LCD Projection System

Bright Images and Faithful Colour Reproduction

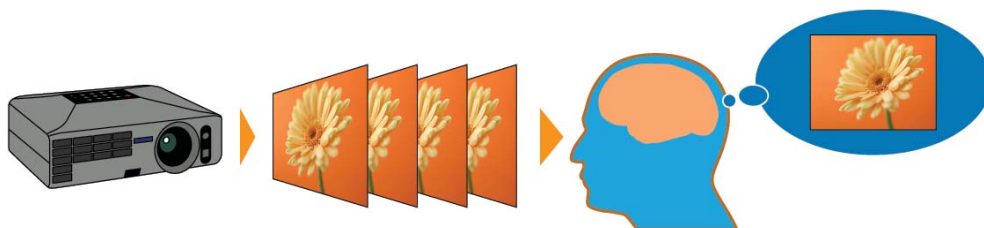
3LCD projectors offer all-time colour (Red, Green and Blue) projection thereby ensuring faithful full colour reproduction. This is suitable for projection of colour intensive images such as videos, photographs and colour charts.

Incredible Details

3LCD projectors are able to produce an unparalleled range of grayscale images, which contributes to delivering incredible colour images that are smooth and seamless.



3LCD projector : RGB are projected at the same time, which makes the single composite image easy on the eyes.



** HTPS (High Temperature Poly-Silicon) is an active matrix transmissive LCD. It is extremely small and produces high-quality images.

Gentle on the Eyes

3LCD projectors' images do not suffer from colour break-up (commonly known as the rainbow effect). The projections are easy on the eyes as you will not be affected by any distorted pattern.

3LCD projectors use 3 separate LCD panels to form a continuous image containing all colours (red, blue and green) ensuring smooth video playback, even for rapid-motion images.

Reliable Technology

With more than 70 million 3LCD chips shipped to date, the powerful and road-tested 3LCD projection technology is extremely reliable, and is trusted by many throughout to deliver sharp and true-to-life images.

PROTECT YOUR PROJECTOR. USE GENUINE LAMPS.



Don't compromise on safety – use Epson genuine lamps to avoid damaging your projector. Eliminate the risk of melting parts of your projector, as well as breaks that result in high-voltage shutdown. With a 0% failure rate even after 2,000 hours of usage – compared to 70% in non-genuine lamps – Epson genuine lamps are safer and more reliable. Choose the best possible viewing experience filled with long-lasting sharpness and colour in every projected image with Epson.



GENUINE EPSON LABEL

To ensure the best quality and safety when using your Epson Projector, look for the “Genuine EPSON Colour Shifting Label” on your projector lamp. Real quality and value, only with Epson genuine supplies.

DANGERS OF NON-GENUINE LAMPS



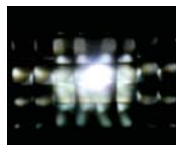
UNRELIABLE

Counterfeit lamps deteriorate and break much faster than genuine ones.



UNSAFE

Parts of your Epson projector such as the housing or wires may melt, disconnect, or become damaged when using non-genuine lamps.



POOR IMAGE QUALITY

Counterfeit lamps may result in inaccurate colour projection, lower brightness levels, as well as flickering images that spoil your viewing experience.

| MODEL NUMBER | | EB-U32 | EB-U04 | EB-W31 | EB-W04 |
|---|-----------------------------------|---|--|---------------------------------|-----------------------|
| Projection Technology | | RGB liquid crystal shutter projection system | | | |
| Specifications of Main Parts | | | | | |
| LCD | Size | 0.67" (D10, C ² fine) | | 0.59" (D9, C ² fine) | |
| | Native Resolution | WXGA | | WXGA | |
| Projection Lens | Type | Optical Zoom (Manual) / Focus (Manual) | | | |
| | F-Number | 1.50 - 1.71 | | 1.58 - 1.72 | |
| | Focal Length | 20.42 - 24.50 mm | | 16.9 - 20.28 mm | |
| | Zoom Ratio | 1 - 1.2 | | | |
| Lamp | Throw Ratio | 1.38 - 1.68 (Wide - Tele) | | 1.30 - 1.56 (Wide - Tele) | |
| | Type | 200W UHE | | | |
| | Life (Normal / Eco) ¹⁾ | 5,000 hours / 10,000 hours | | | |
| Screen Size (Projected Distance) | | | | | |
| Zoom: Wide | | 30" - 300" [0.87 - 9.02 m] | | 33" - 320" [0.9 - 9.0 m] | |
| Zoom: Tele | | 30" - 300" [1.07 - 10.98 m] | | 33" - 320" [1.08 - 10.8 m] | |
| Standard Size | | 60" screen 1.8 - 2.17 m | | 60" screen 1.68 - 2.02 m | |
| Brightness ²⁾ | | | | | |
| White Light Output (Normal / Eco) | | 3,200lm / 2,240lm | 3,000lm / 2,100lm | 3,200lm / 2,240lm | 3,000lm / 2,100lm |
| Colour Light Output | | 3,200lm | 3,000lm | 3,200lm | 3,000lm |
| Contrast Ratio | | 15,000:1 | | | |
| Internal Speaker(s) | | | | | |
| Sound Output | | 2W Monaural | | | 1W Monaural |
| Geometric Correction | | | | | |
| Keystone | Vertical / Horizontal | ±30° / ±30° | | | |
| Auto Keystone Correction | | Yes (Vertical only) | | | |
| Horizontal Slide Keystone Correction | | Yes | | | |
| Quick Corner | | Yes | | | |
| Connectivity | | | | | |
| Analog Input | D-Sub 15pin | 1 (Blue molding) | | | |
| | Composite | RCA x 1 (Yellow) | | | |
| | S-Video | N/A | | 1 | |
| Digital Input | HDMI | 2 (1 supports MHL) | | 1 (MHL supported) | 1 (MHL not supported) |
| Audio Input | 2 RCA (White / Red) | 1 | | | |
| USB Interface | USB Type A | 1 (for USB Memory, Document Camera, Firmware Update) | 1 (for USB Memory, Document Camera, Wireless LAN, Firmware Update) | | |
| | USB Type B | 1 (for USB Display, Mouse, K/B, Control, Firmware Update) | | | |
| Network | Wireless | Built in | Optional (ELPAP10) | | |
| Wireless Specifications | | | | | |
| Supported Speed For Each Mode ³⁾ | | IEEE 802.11b: 11 Mbps, IEEE 802.11g: 54 Mbps, IEEE 802.11n: 130 Mbps | | | |
| Wireless LAN Security | | WPA-PSK/WPA2-PSK (TKIP/AES), WPA2-PSK(AES) | WPA-PSK/WPA2-PSK(TKIP/AES), WPA2-PSK(AES) (Optional Wireless LAN Unit use) | | |
| Supported Connection Mode | | Infrastructure, Access Point | | | |
| Operating Temperature | | | | | |
| | | 5 - 35 °C <41 - 95 °F> (0m / 0ft - 2,286m / 7,500ft) | | | |
| | | 5 - 30 °C <41 - 86 °F> (over 2,286m / 7,500ft) | | | |
| | | (20% - 80% humidity, No condensation) | | | |
| Operating Altitude | | | | | |
| | | 0 - 3,000 m <0 - 9,843 ft> (over 1,500m / 4,921ft: with high altitude mode) | | | |
| Direct Power On / Off | | | | | |
| | | Yes | | | |
| Start-Up Period | | | | | |
| | | About 6 seconds, Warm-up Period: 30 seconds | | | |
| Cool Down Period | | | | | |
| | | Instant Off | | | |
| Air Filter | | | | | |
| Maintenance Cycle | | 5,000 hours / 10,000 hours (Power consumption: Normal / Eco) ⁴⁾ | | | |
| Power Supply Voltage | | | | | |
| | | 100 - 240 V AC ±10%, 50/60 Hz | | | |
| Power Consumption (220 - 240V) | | | | | |
| Lamp On (Normal / Eco) | | 277W / 207W | | | |
| Standby (Network On / Off) | | 2.4W / 0.26W | | | |
| Dimension Excluding Feet (D X W X H) | | | | 234 x 297 x 77 mm | |
| Weight | | 2.6kg | | 2.4kg | |
| Fan Noise (Normal / Eco) | | | | | |
| | | 37dB / 28dB | | | |

¹⁾ Lamp life will vary depending upon mode selected, environmental conditions and usage. Lamp brightness decreases over time.

²⁾ Colour brightness (colour light output) and white brightness (white light output) will vary depending on usage conditions. Colour light output measured in accordance with IDMS 15:4; white light output measured in accordance with ISO 21118.

³⁾ Maximum speed and range is achievable when used with same enhanced mode technology. Actual data rates, features and performance may vary depending on your computer system, the environment and other factors.

⁴⁾ When used in the general office environment (the amount of floating dust: 0.04 - 0.2 mg/m³). Based on the Epson's in-house test results.

Supplied Accessories

Power Cable: 1.8m

Computer Cable (VGA Cable): 1.8m

USB Cable (Type A/B): 1.8m (EB-U32, EB-W31)

Remote Control: Yes, with Alkaline AA Battery x 2

Soft Carrying Case

Optional Accessories

Spare Lamp: ELPLP88

Air Filter: ELPAF32

Wireless LAN: ELPAP10 (EB-U04, EB-W31, EB-W04)

Quick Wireless Connection USB Key: ELPAP09

Ceiling Mount (White Colour): ELPMB23

EB-U32 / U04



EB-W31 / W04



©2015 Epson Singapore Pte Ltd. All Rights Reserved. Reproduction in part or in whole, without the written permission from Epson, is strictly prohibited.

EPSON and EXCEED YOUR VISION are registered trademarks of Seiko Epson Corporation.

All other product names and other company names used herein are for identification purposes only and are the trademarks or registered trademarks of their respective owners.

Epson disclaims any and all rights in those marks. Projected images shown herein are simulations. The actual product design and contents may vary. Specifications are subject to change without notice and may vary between countries. Please check with local Epson offices for more information.

Apple, iPad and iPhone are trademarks of Apple Inc., registered in the U.S. and other countries. App Store is a service mark of Apple Inc.

Android is a trademark of Google Inc.

Information correct as at July 2015

SPECIFICATIONS

EB-X36/X31/X04/S31/S04

| MODEL NUMBER | | EB-X36 | EB-X31 | EB-X04 | EB-S31 | EB-S04 |
|---|-----------------------------------|---|--------------------------------|-------------------|----------------------------------|-------------------|
| Projection Technology | | RGB liquid crystal shutter projection system | | | | |
| Specifications of Main Parts | | | | | | |
| LCD | Size | 0.63" (D7) | 0.55" (D9, C ^{fine}) | 0.55" (D8) | 0.55" (D7) | |
| Native Resolution | | XGA | | | SVGA | |
| Projection Lens | Type | Optical Zoom (Manual) / Focus (Manual) | | | No Optical Zoom / Focus (Manual) | |
| | F-Number | 1.6 - 1.74 | 1.58 - 1.72 | | 1.44 | |
| | Focal Length | 18.4 - 22.08 mm | 16.9 - 20.28 mm | | 16.7mm | |
| | Zoom Ratio | 1 - 1.2 | | | 1.0 - 1.35 (Digital Zoom) | |
| | Throw Ratio | 1.40 - 1.68 (Wide - Tele) | 1.48 - 1.77 (Wide - Tele) | | 1.45 - 1.96 (Wide - Tele) | |
| Lamp | Type | 200W UHE | | | | |
| | Life (Normal / Eco) ¹⁾ | 5,000 hours / 10,000 hours | | | | |
| Screen Size (Projected Distance) | | | | | | |
| Zoom: Wide | | 30" - 300" [0.84 - 8.66 m] | 30" - 300" [0.9 - 9.0 m] | | 30" - 350" [0.88 - 10.44 m] | |
| Zoom: Tele | | 30" - 300" [1.01 - 10.42 m] | 30" - 300" [1.08 - 10.8 m] | | 23" - 260" [0.88 - 10.44 m] | |
| Standard Size | | 60" screen 1.71 - 2.16 m | 60" screen 1.8 - 2.17 m | | 60" screen 1.77 - 2.4 m | |
| Brightness ²⁾ | | | | | | |
| White Light Output (Normal / Eco) | | 3,600lm / 2,520lm | 3,200lm / 2,240lm | 2,800lm / 1,960lm | 3,200lm / 2,240lm | 3,000lm / 2,100lm |
| Colour Light Output | | 3,600lm | 3,200lm | 2,800lm | 3,200lm | 3,000lm |
| Contrast Ratio | | 15,000:1 | | | | |
| Internal Speaker(s) | | | | | | |
| Sound Output | | 2W Monaural | | 1W Monaural | 2W Monaural | 1W Monaural |
| Geometric Correction | | | | | | |
| Keystone | Vertical / Horizontal | ±30° / ±30° | | | | |
| Auto Keystone Correction | | Yes (Vertical only) | | | | |
| Horizontal Slide Keystone Correction | | Yes | | | | |
| Quick Corner | | Yes | | | | |
| Connectivity | | | | | | |
| Analogue Input | D-Sub 15pin | 1 (Blue molding) | | | | |
| | Composite | RCA x 1 (Yellow) | | | | |
| | S-Video | 1 | | | | |
| Digital Input | HDMI | 1 (MHL not supported) | | | | |
| Audio Input | 2 RCA (White / Red) | 1 | | | | |
| USB Interface | USB Type A | 1 (for USB Memory, Document Camera, Wireless LAN, Firmware Update) | | | | |
| | USB Type B | 1 (for USB Display, Mouse, K/B, Control, Firmware Update) | | | | |
| Network | Wireless | Optional (ELPAP10) | | | | |
| Wireless Specifications | | | | | | |
| Supported Speed For Each Mode ³⁾ | | IEEE 802.11b: 11 Mbps, IEEE 802.11g: 54 Mbps, IEEE 802.11n: 130 Mbps | | | | |
| Wireless LAN Security | | WPA-PSK/WPA2-PSK(TKIP/AES), WPA2-PSK(AES) (Optional Wireless LAN Unit use) | | | | |
| Supported Connection Mode | | Infrastructure, Access Point | | | | |
| Operating Temperature | | | | | | |
| | | 5 - 35 °C <41 - 95 °F> (0m / 0ft - 2,286m / 7,500ft) | | | | |
| | | 5 - 30 °C <41 - 86 °F> (over 2,286m / 7,500ft) | | | | |
| | | (20% - 80% humidity, No condensation) | | | | |
| Operating Altitude | | | | | | |
| | | 0 - 3,000 m <0 - 9,843 ft> (over 1,500m / 4,921ft: with high altitude mode) | | | | |
| Direct Power On / Off | | | | | | |
| | | Yes | | | | |
| Start-Up Period | | | | | | |
| | | About 6 seconds, Warm-up Period: 30 seconds | | | | |
| Cool Down Period | | | | | | |
| | | Instant Off | | | | |
| Air Filter | | | | | | |
| Maintenance Cycle | | 5,000 hours / 10,000 hours (Power consumption: Normal / Eco) ⁴⁾ | | | | |
| Power Supply Voltage | | | | | | |
| | | 100 - 240 V AC ±10%, 50/60 Hz | | | | |
| Power Consumption (220 - 240V) | | | | | | |
| Lamp On (Normal / Eco) | | 277W / 207W | | | | |
| Standby (Network On / Off) | | 2.4W / 0.26W | | | | |
| Dimension Excluding Feet (D X W X H) | | | | | | |
| | | 234 x 297 x 77 mm | | | | |
| Weight | | | | | | |
| | | 2.4kg | | | | |
| Fan Noise (Normal / Eco) | | | | | | |
| | | 37dB / 28dB | | | | |

¹ Lamp life will vary depending upon mode selected, environmental conditions and usage. Lamp brightness decreases over time.

² Colour brightness (colour light output) and white brightness (white light output) will vary depending on usage conditions. Colour light output measured in accordance with IDMS 15:4; white light output measured in accordance with ISO 21118.

³ Maximum speed and range is achievable when used with same enhanced mode technology. Actual data rates, features and performance may vary depending on your computer system, the environment and other factors.

⁴ When used in the general office environment (the amount of floating dust: 0.04 - 0.2 mg/m³). Based on the Epson's in-house test results.

Supplied Accessories

Power Cable: 1.8m
Computer Cable (VGA Cable): 1.8m
USB Cable (Type A/B): 1.8m (EB-X36, EB-X31, EB-S31)
Remote Control: Yes, with Alkaline AA Battery x 2
Soft Carrying Case

Optional Accessories

Spare Lamp: ELPLP88
Air Filter: ELPAF32
Wireless LAN: ELPAP10
Quick Wireless Connection USB Key: ELPAP09
Ceiling Mount (White Colour): ELPMB23

EB-X36 / X31 / X04 / S31 / S04



©2015 Epson Singapore Pte Ltd. All Rights Reserved. Reproduction in part or in whole, without the written permission from Epson, is strictly prohibited.

EPSON and EXCEED YOUR VISION are registered trademarks of Seiko Epson Corporation.

All other product names and other company names used herein are for identification purposes only and are the trademarks or registered trademarks of their respective owners.

Epson disclaims any and all rights in those marks. Projected images shown herein are simulations. The actual product design and contents may vary. Specifications are subject to change without notice and may vary between countries. Please check with local Epson offices for more information.

Apple, iPad and iPhone are trademarks of Apple Inc., registered in the U.S. and other countries. App Store is a service mark of Apple Inc.

Android is a trademark of Google Inc.

Information correct as at July 2015