

Easy to use installation projector with advanced features, 6,500 ANSI lumens brightness and WXGA 1280 x 800 resolution in a low profile design.



Key Features

- WXGA resolution and 6,500 lumens white/color output
- Accentualizer - advanced image processing
- Picture by Picture and Picture in Picture
- Two speed motorized zoom, focus and lens shift control
- HDMI 2 inputs
- 20,000 hours hybrid filter*
- 2,500 hours lamp life (Eco mode)**
- 360° display rotation

Hitachi's installation-friendly CP-WX8265 LCD projector is designed to provide maximum presentation impact in mid to large venue applications. It offers a versatile array of innovative, performance-enhancing features along with advanced video display technology providing bold, brilliant colors with incredible image clarity and uniformity. Plus, with motorized zoom, focus and superior lens shift, and a variety of lens options, the CP-WX8265 is at the top of its class when it comes to installation flexibility. With a tough magnesium die cast body, the CP-WX8265 is one of the most durable projectors available today. All this, and with a lower cost of ownership. For added peace of mind, Hitachi's CP-WX8265 is also backed by a generous warranty and our world-class service and support programs.

CP-WX8265

1.800.HITACHI
dmd.info@hal.hitachi.com
hitachi-america.us/projectors



CP-WX8265 LCD Projector

HITACHI
Inspire the Next

Quality, reliability and installation convenience.

From mid-size to very large auditoriums and conference halls, Hitachi's CP-WX8265 LCD projector is the perfect solution. With 6,500 ANSI lumens brightness and WXGA 1280 x 800 resolution, the CP-WX8265 will deliver dynamic images guaranteed to dazzle any audience. Incorporating Hitachi's leading-edge technology, the CP-WX8265 features Hitachi's Accentualizer for advanced image processing, long lamp life, a variety of lens options to accommodate your specific application, and is



wireless presentation compatible. Plus, embedded networking gives you the ability to manage and control multiple projectors over your LAN (scheduling of events, centralized reporting, image transfer, and e-mail alerts). Even with the array of advanced features, Hitachi's CP-WX8265 is designed for user-friendly operation and installation convenience.



3LCD Technology



Closed Captioning



Crestron
Integrated Partner



AMX Device
Discovery



Hitachi Trade-Up
Program



3 Year Warranty

HDMI HDMI

HI0242-Rev.2-03/14

All specifications subject to change without notice.

3LCD and the 3LCD logo are registered trademarks of the Seiko Epson Corporation.

iPad and iPhone are registered trademarks of Apple Inc., registered in the U.S. and other countries.

©2014 Hitachi America, Ltd. All Rights Reserved.

UNIQUE FEATURES

Accentualizer

Hitachi original technology makes pictures look more real by enhancing sharpness, gloss and shade to make pictures as clear as pictures on a flat-panel device. You can also adjust the effects by three levels according to your surroundings so that the colors of projected images are the actual colors of the objects they represent.



Sharpness



Gloss

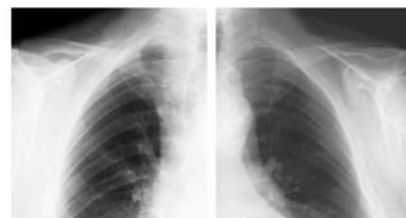


Shade

DICOM® Simulation Mode

The DICOM (Digital Imaging and Communications in Medicine) Simulation Mode projects grayscale images which approximate DICOM Part 14 specifications. This mode is ideal for viewing grayscale medical images, such as X-rays, for training and educational purposes.

The projectors have a DICOM (Digital Imaging and Communications in Medicine) Simulation Mode. This mode simulates the DICOM standard, which is a standard applicable to digital communications in medicine, and is useful for displaying medical images such as X-rays. These projectors are not medical devices and are not compliant with the DICOM standard, and neither the projector nor the DICOM Simulation Mode should be used for medical diagnosis. Comparison photos are simulations.



Standard Mode

DICOM Simulation Mode

Multiple Lens Options

Projectors achieve a brightness of the highest class in the industry by adopting a short arc length lamp with a small F-number lens. There are a variety of lenses to use for this projector, all providing specified projector brightness! In addition to the one ML703 middle throw standard lens, four optional lenses are available: FL701 fixed, SL702 short throw, LL704 long throw and UL705 ultra-long throw.



Short arc length lamp



Small F-number lens

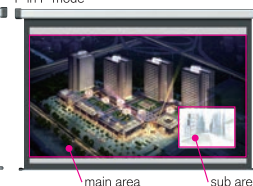
Picture by Picture and Picture in Picture

Images from two input signals at the same time. Picture by Picture (P by P) enables you to compare two images side by side. Picture in Picture (P in P) enables you to display one image within another image. These functions are handy when you need to compare two sets of data or other material.

P by P mode



P in P mode



360° Rotation

Display rotation of 360° for creative applications and greater installation flexibility.



Hitachi America, Ltd.

Toll Free: 1.800.HITACHI • Email: dmd.info@hal.hitachi.com
Web: hitachi-america.us/projectors



CP-WX8265 LCD Projector

HITACHI
Inspire the Next

STANDARD FEATURES

Center Lens Design: This feature makes it easy to align the projector with the center of the screen for faster and trouble-free setup.

Motorized Zoom, Focus and Lens Shift

Control: Allows for greater range of installation possibilities. With the motorized function you can make fine adjustments through the remote control or RS232/IP device.

Perfect Fit 2: Enables the user to adjust individual corners and sides independent of one another. Perfect Fit 2 provides vertical and horizontal digital correction of either barrel or pin cushion distortions. This feature helps correct geometric and complicated distortions. Perfect Fit 2 allows the projected image to fit correctly to the screen quickly and easily.

Projector Quick Connection App For Mobile Devices:

Our iOS application offers full projector control and also provides the capability to display photos, document files and web site contents. Available for iPad®, iPhone® and Android devices. Works over your LAN via your RJ-45 port or via an optional USBWL11N wireless adapter.

Status Monitor: With Hitachi's status monitor, you'll have access in real time to projector diagnostics. Status updates include configuration information, maintenance history, as well as error and alarm messaging. For even greater user convenience, the status monitor can be accessed on the rear input panel or through the Hitachi network tools software.

Wired and Wireless Switcher Solutions:

Multifunction switcher operates in conjunction with the receiver to provide expanded source selection and switching options for connected devices. The switcher is sold as an optional accessory that can provide 1080p 30 fps wireless via WHDI for both video and audio.

Network Control, Maintenance and Security:

Embedded networking gives you the ability to manage and control multiple projectors over your LAN. Features include scheduling of events, centralized reporting, image transfer and e-mail alerts for reactive and routine maintenance.

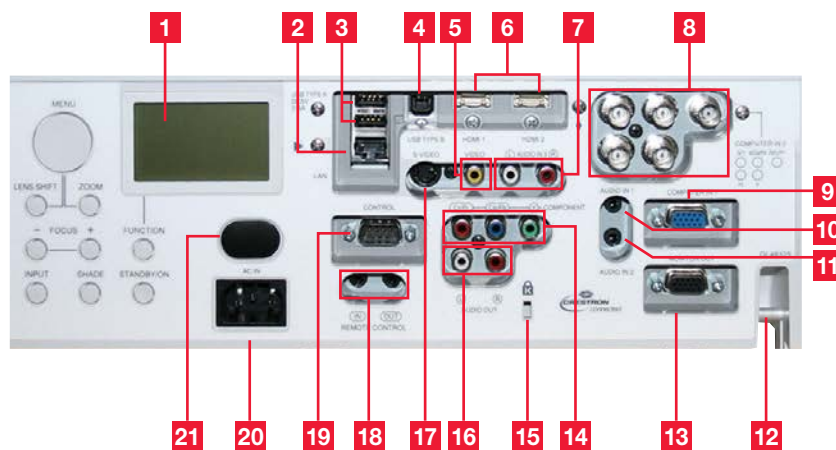
PC-Less Presentation: By using a USB memory stick or other storage device, you can use the projector without a computer. Menus are easy to see with a thumbnail display. Additionally there is also a slideshow function.

PJMessenger: PJMessenger function allows you to send and display text messages and audio alerts on your networked projectors. It is an easy and efficient way to send announcements out to multiple units.

Wireless Presentation Compatible: Connect the projector to a computer or your network using the optional USB wireless adapter (part number USBWL11N). The adapter supports IEEE802.11b/g and the latest 11n.



Input/Outputs



CP-WX8265

HI0242-Rev.2-03/14

All specifications subject to change without notice.

3LCD and the 3LCD logo are registered trademarks of the Seiko Epson Corporation.

iPad and iPhone are registered trademarks of Apple Inc., registered in the U.S. and other countries.

©2014 Hitachi America, Ltd. All Rights Reserved.

Hitachi America, Ltd.

Toll Free: 1.800.HITACHI • Email: dmd.info@hal.hitachi.com

Web: hitachi-america.us/projectors



CP-WX8265 LCD Projector

HITACHI
Inspire the Next

Accessories and Lenses

Supplied Accessories	Remote control, power cord, computer cable, one standard ML703 lens, lens cover, user's manual, security label, application CD, adapter cover
Optional Accessories	USBWL11N USB wireless adapter, MS-1 wired multifunction switcher, MS-1WL wireless multifunction switcher
Optional Lenses	4 optional lenses are available: FL701, SL702, LL704, UL705
Replacement Parts	
Lamp	DT01471
Remote Control	HL02801
Filter	UX38242

Projection Throw Chart

Screen Size 16:10		Throw Distance	
Diagonal	Width	Min	Max
30	25	39	78
80	68	104	206
100	85	129	257
150	127	194	385
200	170	259	513
250	212	323	641
300	254	388	769
600	509	775	1537

Throw Ratio: 1.5 - 3.0 : 1 (distance : width)
Screen size and throw distance are measured in inches with standard lens ML703.

Projection Lens Chart

Lens	Inches	Meters
ML703	122 - 242	3.1 - 6.2
FL701	66	1.7
SL702	97 - 145	2.5 - 3.7
LL704	231 - 392	5.9 - 10.0
UL705	393 - 667	10.0 - 16.9

Projection distances measured in inches and meters with standard lens and optional lenses when projecting onto a 100" diagonal screen.

Specifications

Display	Projection Technology	3LCD, 3 chip technology
	Resolution	WXGA 1280 x 800
	White Light Output	6,500 ANSI lumens
	Color Light Output	6,500 ANSI lumens
	Colors	16.7 million colors
	Aspect Ratio	Native 16:10 / 4:3 and 16:9 compatible
Lens & Operation	Contrast Ratio	3000 : 1 (using active IRIS)
	Throw Ratio (distance : width)	1.5 - 3.0:1 (with standard lens)
	Lens	F = 1.6 - 2.9, f = 24 - 48 mm x 2.0 motorized zoom, focus & lens shift
	Lamp Wattage	365W
	Expected Lamp Life*	Approximately 2,000 hours (standard mode) 2,500 hours (Eco mode)
	Expected Filter Life**	Approximately 20,000 hours
Compatibility	Speaker Output	N/A
	Keystone	H and V: +/- 35° (with standard lens)
	Computer	VGA, SVGA, XGA, WXGA/WXGA+/SXGA/SXGA+/UXGA (compressed), MAC 16"
	H-Sync	31.5 kHz - 106 kHz
	V-Sync	56 Hz - 120 Hz
	Composite Video	NTSC, NTSC4.43, PAL, PAL-M, -N, SECAM
Connectors	Component Video	480i, 480p, 576i, 720p, 1080i, 1080p
	HDMI	480i, 480p, 576i, 720p, 1080i, 1080p, Computer signal TMDS clock 27 MHz - 150 MHz
	Digital Input	HDMI x 2 (HDCP compliant)
	Computer Input 1	15-pin mini D-sub x 1
	Computer Input 2	BNC x 5
	Computer Monitor Output	15-pin mini D-sub x 1
Ratings & Warranty	Video Input	
	S-Video	Mini DIN 4-pin x 1
	Composite Video	RCA jack x 1
	Component Video	RCA jack x 3, 15-pin mini D-sub x 1 (shared with computer In 1) BNC x 3 (shared with computer In 2)
	Audio Input	3.5 mm stereo mini jack x 2, RCA jack (L/R) x 1
	Audio Output	RCA jack (L/R) x 1
Connectors	Network LAN Wired	RJ-45 port (10 base-T / 100 base-TX)
	Network LAN Wireless	USB-A, IEEE802.11 b/g/n - optional wireless adapter required
	USB	Type A x 2 (PC-less presentation, wireless adapter) Type B x 1 (USB display or mouse control)
	Wired Remote Control	3.5 mm stereo mini jack (IN/OUT)
	Control Terminals	9-pin D-sub x 1 (RS-232 control)
	Power Supply	AC100-120V / AC220-240V, 50/60Hz
Connectors	Power Consumption	500W
	Operating Temperature	32°F - 113°F (0°C - 45°C)
	Dimensions (W x D x H)	19.6" x 15.6" x 5.3" (without lens)
	Weight	Approximately 19.4 lbs.
	Approvals	UL 60950-1 / cUL, FCC Part 15 subpart B class A
	Warranty	3 year limited parts and labor Extended Service Contract available (additional cost)

* Actual lamp life will vary by individual lamp and based on environmental conditions, selected operating mode, user settings and usage. Hours of average lamp life specified are not guaranteed and do not constitute part of the product or lamp warranty. Lamp brightness decreases over time.

** Actual filter life will vary by individual filter and based on environmental conditions, selected operating mode, user settings and usage. Hours of average filter life specified are not guaranteed and do not constitute part of the product warranty.

CP-WX8265

HI0242-Rev.2-03/14

All specifications subject to change without notice.

3LCD and the 3LCD logo are registered trademarks of the Seiko Epson Corporation.

iPad and iPhone are registered trademarks of Apple Inc., registered in the U.S. and other countries.

©2014 Hitachi America, Ltd. All Rights Reserved.

Hitachi America, Ltd.

Toll Free: 1.800.HITACHI • Email: dmd.info@hal.hitachi.com

Web: hitachi-america.us/projectors

PEAK
CONFERENCE
www.PeakConference.com

