








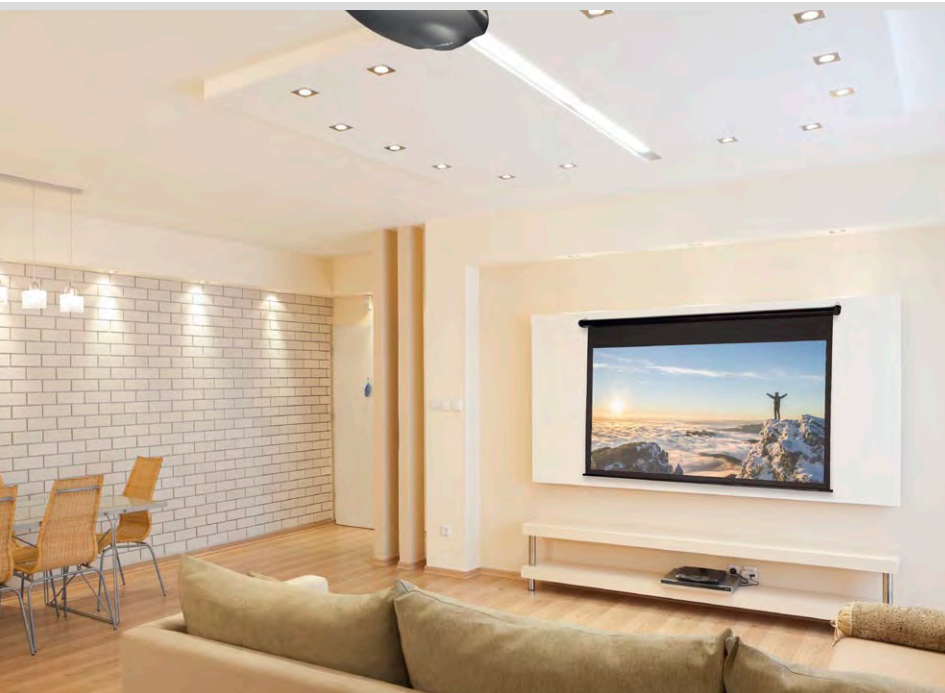
3D HOME THEATER PROJECTOR HD90

Optoma

LED DIGITAL HOME CINEMA PROJECTOR



-  Native Full HD 1080p (1920 x 1080) resolution powered by Optoma LED Technology for the most astounding digital home cinema experience
-  Next-generation exclusive PureEngine processing for sharp judder-free video with perfectly balanced color
-  1200 lumens bright with a stunning 500,000:1 contrast ratio with Dynamic black for deeper blacks with exceptional shadow detail
-  All glass multi-coated lens with vertical and horizontal lens shift provides superior focus and installation flexibility
-  VESA 3D Sync Port with 2D to 3D conversion. Enjoy your favorite movie or TV show in full 3D
-  ISF calibration settings for Day/Night viewing modes
-  Enjoy super wide 2.35:1 content, Auto235 feature supports fixed and powered anamorphic lenses



The Optoma HD90 is a top of the line full LED, home cinema projector. It's a product of Optoma's 10+ years of experience in projector design for home theater.

Its LED light source delivers 1200 lumens bright images with a mind-blowing 500,000:1 contrast ratio. Produces 127% wider color gamut than similar lamp based projectors, the result is a fantastic image quality with deep vibrant colors and superb saturation.

The Optoma HD90 is packed with an extensive list of advanced features. PureMotion technology for sharp, fluid, judder free video, UltraDetail technology further enhances visible detail, Full 3D capability with 2D to 3D conversion. The projector analyzes every frame to generate a natural 3D effect from 2D sources. Vertical and horizontal lens shift combined with a razor sharp 1.9x zoom ratio projection lens for maximum installation flexibility, ultra-quiet operation and much more.

Optoma's commitment to quality ensures your projector will provide years of care-free operation.

CONNECTIVITY (May require optional accessories)



COMPUTERS



SMART
PHONES



TABLETS



3D BLU-RAY/DVD PLAYERS

SET TOP BOXES



CAMCORDERS



GAME
CONSOLES



DIGITAL
CAMERAS



Roku®



Apple TV®

3D HOME THEATER PROJECTOR — HD90

OPTICAL/TECHNICAL SPECIFICATIONS

Display Technology	Single 0.65" DC3 DMD DLP® Technology by Texas Instruments™
Native Resolution	HD (1920 x 1080)
Maximum Resolution	WUXGA (1920 x 1200)
Brightness	1200 lumens
Contrast Ratio	500,000:1 (full on/full off)
Displayable Colors	1.07 Billion
Lamp Life and Type	20,000+ hours LED
Projection Method	Front, rear, ceiling mount, table top
Keystone Correction	±15°
Uniformity	>85%
Offset	±60% Vertical, ±10% Horizontal
Aspect Ratio	16:9 Native, 4:3 compatible
Throw Ratio	1.22–1.52 (distance/width)
Projection Distance	3.5'–55.2'
Image Size	40"–500"
Projection Lens	F=2.0–2.32, f=18.07–22.59, 1.25x Zoom & Focus
Noise Level	23dB
Remote Control	IR backlit remote control
Operating Room Temperature	41–104°F (5–40°C), 85% max humidity
Power Supply	AC Input 100–240V, 50–60Hz, auto-switching
Power Consumption	Max 225 Watts, Min 120 Watts, <0.5W (standby-ECO)

COMPATIBILITY SPECIFICATIONS

Computer Compatibility	WUXGA, HD, UXGA, SXGA+, WXGA, SXGA, XGA, SVGA, VGA
Video Input Compatibility	NTSC, PAL, SECAM, SDTV (480i), EDTV (480p), HDTV (720p, 1080i/p)
3D Compatibility*	Supports all HDMI 1.4a mandatory 3D formats (Frame pack, side-by-side, top- bottom) and up converts frame rate from 60Hz to 120Hz or 24Hz to 144Hz (i.e 60 or 72 frames per eye). 3D glasses are needed and is sold separately. Refer to user manual for details.
Vertical Scan Rate	24–85Hz, 120Hz
Horizontal Scan Rate	15.375–91.146KHz
User Controls	Complete on-screen menu adjustment in 22 languages
I/O Connection Ports	Two HDMI 1.4a, VGA-in, component, composite video, USB-A (charging port), RS-232C, two 12V triggers, 3D VESA port

PHYSICAL SPECIFICATIONS

Security	Kensington® lock port, and keypad lock
Weight	15.4 lb (7 kg)
Dimensions (W x H x D)	13.6" x 6.4" x 17.4" (345 x 161.5 x 443 mm)



Warranty

3-Year Optoma Express Service

In the Box (Standard Accessories)

HD90 projector, AC power cord, remote control, batteries for remote, RF 3D glasses, RF 3D emitter, multilingual CD-ROM user's manual, quick start card, and warranty card

Optional Accessories

HDMI cable, ceiling mount, Optoma screen, RF 3D glasses, RF 3D emitter

Accessory Part Numbers

Power Cord (11M): BC-PUPIXY11
VGA to component adaptor: BC-VGCRXY00
RF 3D Glasses: ZF2300GLASSES
Mount: BM-5001U
RF 3D emitter: BC300
Remote: SP.85F02GC01

UPC 796435 81 199 0

PEAK
CONFERENCE
www.PeakConference.com

www.OptomaUSA.com

Optoma

*3D content can be viewed with RF active shutter glasses when projector is used with a compatible 3D player. RF 3D glasses require the use of an RF 3D emitter and a projector with a 3D VESA Sync port. Please visit www.OptomaUSA.com for more information.

Copyright © 2014 Optoma Technology, Inc. DLP® and the DLP logo are registered trademarks of Texas Instruments™. All other trademarks are the property of their respective owners. All specifications subject to change at any time. 07082015