










**CONVENIENCE AND FULL CONTROL
 WITH MULTI-PC PROJECTION.**

Combining dynamic image quality with exceptional versatility, this Epson projector series boasts a high colour brightness to deliver vibrant and realistic colour projections. Equipped with a host of advanced features including multi-PC projection, optional Wi-Fi connectivity, Colour Universal Design, a high contrast ratio and a sliding horizontal keystone adjuster, this projector series empowers you to deliver vivid, sharp presentations every time.



EB-S21/97/945/965

EB-955W

- 
Wi-Fi*
- 
iProjection
- 
Multi PC Connection
- 
Horizontal Keystone Adjuster
- 
HDMI
- 
3-in-1 USB Display
- 
Power Savings

ENGINEERED FOR BUSINESS

Impeccable Performance

Deliver flawless presentations with multi-PC projection, optional Wi-Fi connectivity, high contrast ratio, HDMI connection and the horizontal keystone adjuster.

Made for Everyone

Designed with a Colour Universal Design for those with various types of colour vision, and equipped with eco-friendly features.

Stunning Colour Brightness

Achieve dazzling, sharp and colourful images with the high Colour Light Output.



*Optional with Wireless Adaptor ELPAP07

Achieve easy mobile presentations with Epson's multimedia projector series. Designed for flexibility and ease-of-use, these Epson projectors come with advanced features such as multi-PC projection, HDMI connection and automatic keystone adjustments for smooth and high contrast presentations.

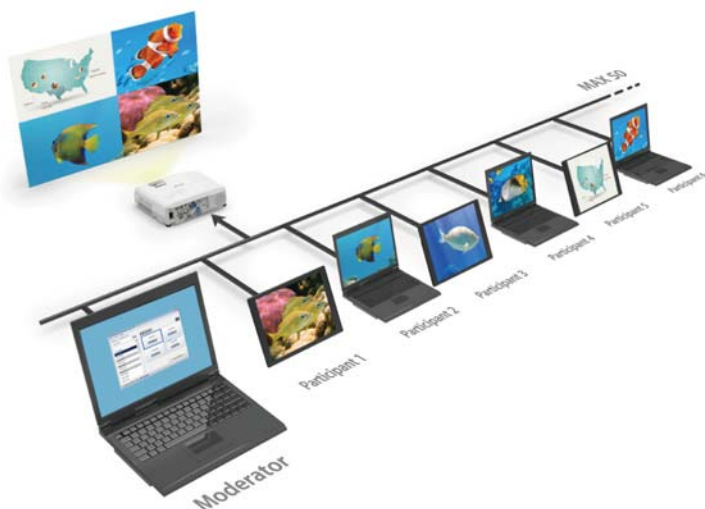


Impeccable Performance

Multi-PC Projection

With the control of a host PC, up to 50 terminals can be connected via the multi-PC projection from a single projector.

The host PC acts as a moderator, selecting media from up to 4 terminals to be projected simultaneously. With the moderator function, you can maintain control and prevent tampering with what's projected on screen.



Wireless Transmission

Enjoy enhanced connectivity and flexibility with Wi-Fi connectivity*. Easily share and transmit images, text and files from your smart devices using the "Epson iProjection" application for smooth and smart projections. An additional attachment piece ensures the wireless LAN adaptor never accidentally drops off.

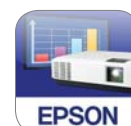
* Wireless LAN adaptor ELPAP07 is required.



Epson iProjection

With the iProjection application for both iOS and Android, wireless projection from a smart device is made possible. This feature supports various files and allows you to present your smartphone contents with ease. It also lets you use other touch-screen operations, such as flicking to turn pages and pinching to zoom in or out.

* In iProjection, projector profile search, multi-screen display, distribution function, audio transfer, movie file transfer, interrupt connection disabling and encryption data transfer capabilities are not supported.



High Contrast Ratio

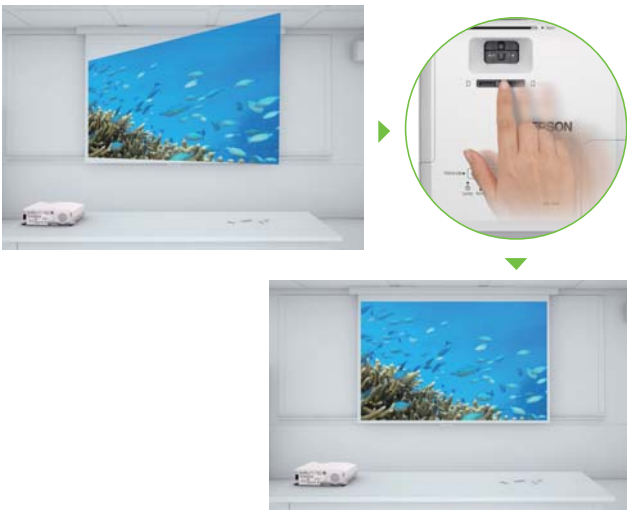
Add brilliance to your presentation with a high contrast ratio. Boasting a contrast ration of 10000:1, these projectors enable your audience to view your presentation with added clarity even down the finest details.



Horizontal Keystone Adjuster

Deliver powerful presentations anywhere in the room. With the easy-to-use sliding Horizontal Keystone Adjuster, screen corrections can be done quickly, easily and accurately, even in a limited space.

With automatic vertical keystone detection and adjustment, there is no longer any need for awkward and time-consuming manual image adjustments that interrupt the smooth flow of your presentation delivery. This handy feature automatically detects the projector's vertical keystone distortion and corrects it instantly.



Images can be enjoyed quickly and beautifully anywhere you choose.

HDMI Connectivity

With the built-in HDMI terminal, the transmission of digital images and sounds is a breeze. Transfer and enjoy high-quality images and sounds with just one cable. With digital connection, even images projected from a SVGA model will appear crisp and clear.



Direct Display from USB

View a JPEG, BMP, PNG or GIF slideshow without a PC by simply inserting a USB memory device into the USB port on the projector.



Powerful 16W Speaker

This projector series* comes equipped with a powerful 16W speaker for clear sound, speech and music broadcast to your audience, saving you the need to prepare external speakers.

* Not applicable to EB-S21



A/V Mute Lens Shutter

Fully manage what is being projected simply by sliding the A/V Mute Lens Shutter. Doing so will project a black screen internally, switching off all audio and visual instantly, akin to putting the projector into "sleep" mode.

Alternatively, use the A/V Mute Timer to avoid unnecessary projection. When this is turned 'ON', the projector will automatically power off if the A/V shutter is closed for 30 minutes, saving lamp life and reducing power consumption.



IR Receivers

With IR Receivers at both the front and rear of the projector, using the remote control has never been easier. Now, you'll be able to use the remote control wherever the projector is placed for a seamless presentation.



Convenient Connection to a Document Camera

This projector series conveniently connects directly to Epson's range of Document Camera via a USB/HDMI cables without a computer, revolutionising the way you present.

Simply place the presentation material under the camera and enlarge the projection according to the desired size – perfect for classroom and office discussions.



Redirected Exhaust

The front-facing exhaust is intelligently positioned to prevent anyone from being exposed to the hot exhaust, especially when on a narrow table. This allows the audience to fully concentrate on the presentation, even if they are seated beside or behind the projector.



Epson Projectors



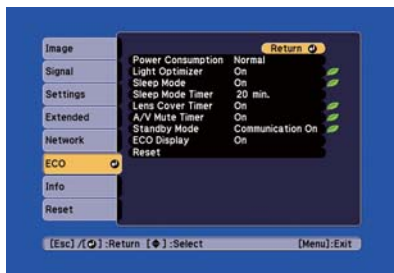
Other projectors with side exhaust

Made for Everyone

Eco-friendly

Reduce power consumption and do your part for the environment with these eco-friendly features. Fully manage your projector and save power using the "ECO mode" and lamp dimming function, which allows you to adjust the brightness and power consumption of the projector.

When the Sleep Mode is set to "On", the projector enters a very low brightness setting if no signal is detected for five minutes, reducing lamp wattage by up to 70%.



Lamp dimming function

Colour Universal Design

Developed in consideration for people with various types of colour vision, the Colour Universal Design (CUD) uses colour schemes that can be easily identified and distinguished so important information is always accurately conveyed. With this user-oriented design system, functions on the projector's remote control, control panel and LED lights can be easily seen, enabling everyone to operate the projector with ease.

Common-type colour vision



Colourblind (deuteranopia)



Users with common-type colour vision will see the orange button while users with colourblind will see brown button.



Both of the users with common-type colour vision and colourblind will see the blue button.



SEE VIBRANT, REALISTIC COLOURS WITH HIGH COLOUR BRIGHTNESS.

A New Specification

Projectors have always had their brightness rated only for white light. However, they may have very different colour brightness levels. The Colour Brightness specification provides a new way for buyers to compare the holistic performance (white and colour light brightness) of projectors to make a more informed decision.



Epson
Colour Brightness 2600 Lumens
White Brightness 2600 Lumens

Competitor
Colour Brightness 750 Lumens
White Brightness 2700 Lumens

Why Does Colour Brightness Matter?

Even if a projector has high white brightness, its Colour Brightness could be as low as 1/3 of its white light brightness specification. With a projector that has high Colour Brightness, you'll see vibrant, realistic colours; but if Colour Brightness is low, colours can look dull and dark, skin tones can be reproduced poorly and important details can be lost.



Epson

Competitor

What is Colour Brightness?

As the term implies, Colour Brightness is a new international standard that states a projector's colour light output in lumens. It measures the brightness of a projector's red, green and blue light.

These are the measurements to look for:

Colour Brightness - Colour Light Output

White Brightness - White Light Output

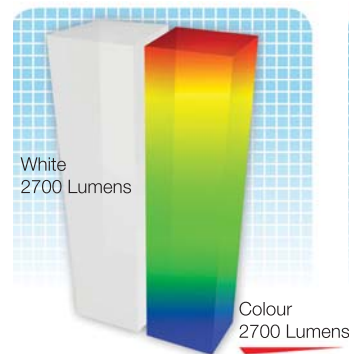


Epson

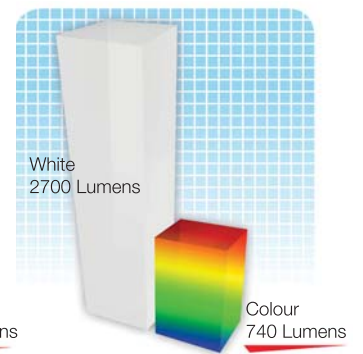
Competitor

How to Find a Projector's Colour Brightness?

1. Look for separate Colour Brightness and white brightness specification.
2. Projectors with similar white brightness levels can have vastly different and significantly lower Colour Brightness levels.
3. Many manufacturers may not want you to know their projectors are only 1/3 as bright when measuring colour.



Epson



Other 1-Chip Projectors



www.epson.com.sg/colourbrightness

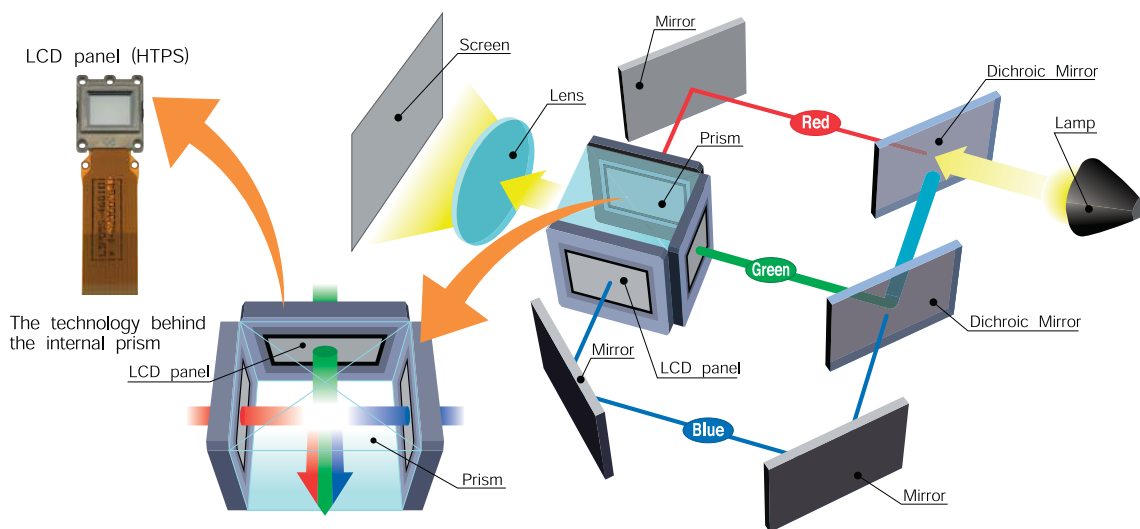
EPSON 3LCD TECHNOLOGY – FOR BRIGHT, FAITHFUL COLOURS

3LCD projectors offer brighter and more accurate colours as they produce different shades and hues by filtering, then mixing beams of the three primary colours (red, green and blue).

In a 3LCD projector, white light is first split into the three beams of primary colours. Each beam is then filtered through its own LCD that will give each individual pixel of the image its exact brightness for each colour. The colour beams are then perfectly recombined in a prism before being projected out as a complete image.

This compares to projectors using single-chip technology that actually project individual colours sequentially by filtering their single white light beam through a colour wheel, and then relying on human colour perception to combine the colours in the viewers' minds.

As a result, 3LCD projectors also offer greater detail, smoother gradations, no "colour breakup" effect, are easier on viewers' eyes, and consume about 25% less power to achieve the same brightness compared to a single-chip projector using a lamp of the same wattage.



3LCD projector : RGB are projected at the same time, which makes the single composite image easy on the eyes.

- An independent test by projector review media ProjectorCentral.com in 2009 of about 800 projectors found that on average, 3LCD projectors use 25% less power than single-chip projectors.



www.3lcd.com



Eco Features

- Uses just 0.29W of power in standby mode
- Projector optics employ lead-free lenses
- Unpainted plastic housing reduces the environment impact
- The flame retardants used in the plastic housing do not contain chlorine or bromine

Better Products for a Better Future™

For more information on Epson's environmental programmes, visit <http://global.epson.com/SR/environment>.

PARTNERS IN PERFECTION

Wireless LAN Adaptor ELPAP07



Supports 802.11 b/g/n connection
Compatible with all Epson wireless-enabled projectors

Desktop Document Camera ELPDC20



3kg / 6.6lbs
2 megapixels with 30fps
12 x optical zoom
1080p output resolution
HDMI digital connectivity

Ultra-portable Document Camera ELPDC06



Easily portable; 0.96kg / 2.11lbs
1.92 megapixels with 15fps
4 x digital zoom
USB powered

MODEL NUMBER	EB-945	EB-965	EB-955W
Projection Technology	RGB liquid crystal shutter projection system (3LCD)		
Specifications of Main Parts			
LCD	Size	0.63" with MLA (D7)	0.59" with MLA (D8)
	Native Resolution	XGA	WXGA
Projection Lens	Type	Optical Zoom (Manual) / Focus (Manual)	
	F-Number	1.51 - 1.99	
	Focal Length	18.2 - 29.2 mm	
	Zoom Ratio	1 - 1.6	
	Throw Ratio	1.38 - 2.24 (Wide - Tele)	
Lamp	Type	200W UHE	
	Life (Normal / Eco) ¹	5,000 hours / 6,000 hours	
Screen Size (Projected Distance)			
Zoom : Wide	30" - 300" [0.84 - 8.4 m]		29" - 280" [0.84 - 8.4 m]
Zoom : Tele	30" - 300" [1.36 - 13.9 m]		29" - 280" [1.36 - 13.9 m]
Standard Size	60" screen 1.69 - 2.75 m		60" screen 1.79 - 2.92 m
Brightness²			
Colour Light Output	3,000lm	3,500lm	3,000lm
White Light Output (Normal / Eco)	3,000lm / 2,100lm	3,500lm / 2,950lm	3,000lm / 2,100lm
Contrast Ratio	10,000:1		
Internal Speaker(s)			
Sound Output	16W Monaural		
Keystone Correction			
Vertical / Horizontal	±30° / ±30°		
Auto Keystone Correction	Yes (Vertical)		
Connectivity			
Analog Input	D-Sub 15pin	2 (Blue)	
	Component	D-Sub 15pin x 2 (Blue molding) (common with Analog RGB connector)	
	Composite	RCA x 1 (Yellow)	
	S-Video	Mini DIN x 1	
	HDMI	1	
Digital Input	1		
Output Terminal	D-Sub 15pin 1 (Black molding) (Output signal: Computer 1 only)		
Audio Input	RCA (White/Red)	1 Pair	
	Stereo Mini Jack	2	
Audio Output	Stereo Mini Jack 1		
Others	USB Type A	1	
	USB Type B	1	
	Microphone Input	1	
CONTROL I/O	RS-232C	D-Sub 9pin x 1	
	USB	Type B	
Network	Wired Lan	RJ45 x 1, 100Mbps	
	Wireless	ELPAP07	
Wireless Specifications			
Supported Speed For Each Mode ³	IEEE 802.11b: 11 Mbps, IEEE 802.11g: 54 Mbps, IEEE 802.11n: 130 Mbps		
Wireless Lan Security	WPA/WPA2-Personal (with optional Wireless LAN Unit)		
Operating Temperature			
	5 - 35 °C <41 - 95 °F> (0m / 0ft - 2,286m / 7,500ft) 5 - 30 °C <41 - 86 °F> (over 2,286m / 7,500ft) (20% - 80% humidity, unfrozen)		
Operating Altitude			
	0 - 3,000 m <0 - 9,843 ft> (over 1,500m / 4,921ft: with high altitude mode)		
Direct Power On / Off			
	Yes		
Start-Up Period			
	About 5 seconds, Warm-up Period: 30 seconds		
Cool Down Period			
	Instant Off or 0 second		
Air Filter	Type	Normal (ELPAF32)	
	Maintenance Cycle	3,000 hours ⁴	
Power Supply Voltage			
	100 - 240 V AC ±10%, 50/60 Hz		
Power Consumption (220 - 240V)			
Lamp On (Normal / Eco)	287W / 215W		
Standby (Network On / Off)	3.1W / 0.29W		
Dimension Excluding Feet (D X W X H)			
	269 x 297 x 87 mm		
Weight			
	2.9kg		
Fan Noise (Normal / Eco)			
	37dB / 29dB		

Supplied Accessories

- Power Cable: 1.8m
- Computer Cable (VGA Cable): 1.8m
- Remote Control: Yes, with Alkaline AA Battery x 2
- Cable Cover: Attached
- Bundled Software: Projector Software (CD-ROM)
- User's Manual Set: CDROM
- Soft Carrying Case: ELPKS67

Optional Accessories

- Spare Lamp: ELPLP78
- Air Filter: ELPAF32
- Wireless LAN Adaptor: ELPAP07
- Quick Wireless Connection USB Key: ELPAP09
- Ceiling Mount: ELPMB23

EB-945 / 965 / 955W



©2013 Epson Singapore Pte Ltd. All Rights Reserved. Reproduction in part or in whole, without the written permission from Epson, is strictly prohibited.

EPSON and EXCEED YOUR VISION are registered trademarks of Seiko Epson Corporation.

All other product names and other company names used herein are for identification purposes only and are the trademarks or registered trademarks of their respective owners.

Epson disclaims any and all rights in those marks. Projected images shown herein are simulations. The actual product design and contents may vary. Specifications are subject to change without notice and may vary between countries. Please check with local Epson offices for more information.

Apple, iPad and iPhone are trademarks of Apple Inc., registered in the U.S. and other countries. App Store is a service mark of Apple Inc.

Android is a trademark of Google Inc.

Information correct as at September 2013

¹ Lamp life will vary depending upon mode selected, environmental conditions and usage. Lamp brightness decreases over time.

² Colour brightness (colour light output) and white brightness (white light output) will vary depending on usage conditions. Colour light output measured in accordance with IDMS 15:4; white light output measured in accordance with ISO 21118.

³ Maximum speed and range is achievable when used with same enhanced mode technology. Actual data rates, features and performance may vary depending on your computer system, the environment and other factors.

⁴ When used in the general office environment (the amount of floating dust: 0.04 - 0.2 mg/m³). Based on the Epson's in-house test results. 25°C (77°F).

MODEL NUMBER	EB-S21	EB-97	
Projection Technology	RGB liquid crystal shutter projection system (3LCD)		
Specifications of Main Parts			
LCD	Size	0.55" without MLA (D7)	0.55" without MLA (D8)
	Native Resolution	SVGA	XGA
Projection Lens	Type	NA	Optical Zoom (Manual) / Focus (Manual)
	F-Number	1.44	1.58 - 1.72
	Focal Length	16.7mm	16.9 - 20.28 mm
	Zoom Ratio	1.0 - 1.35 (Digital Zoom)	1 - 1.2
	Throw Ratio	1.45 - 1.96 (Wide - Tele)	1.48 - 1.77 (Wide - Tele)
Lamp	Type	200W UHE	
	Life (Normal / Eco) ¹	5,000 hours / 6,000 hours	
Screen Size (Projected Distance)			
Zoom : Wide	30" - 350" [0.88 - 10.44 m]	30" - 300" [0.9 - 9.0 m]	
Zoom : Tele	23" - 260" [0.88 - 10.44 m]	30" - 300" [1.08 - 10.8 m]	
Standard Size	60" screen 1.77 - 2.4 m	60" screen 1.8 - 2.17 m	
Brightness²			
Colour Light Output	3,000lm	2,700lm	
White Light Output (Normal / Eco)	3,000lm / 2,100lm	2,700lm / 1,890lm	
Contrast Ratio	10,000:1		
Internal Speaker(s)			
Sound Output	5W Monaural	16W Monaural	
Keystone Correction			
Vertical / Horizontal	±30° / ±30°		
Auto Keystone Correction	Yes (Vertical)		
Connectivity			
Analog Input	D-Sub 15pin	2 (Blue)	
	Component	D-Sub 15pin x 2 (Blue molding) (common with Analog RGB connector)	
	Composite	RCA x 1 (Yellow)	
	S-Video	Mini DIN x 1	
Digital Input	HDMI	1	
Output Terminal	D-Sub 15pin	1 (Black molding) (Output signal: Computer 1 only)	
Audio Input	RCA (White/Red)	1 Pair	
	Stereo Mini Jack	2	
Audio Output	Stereo Mini Jack	1	
Others	USB Type A	1	
	USB Type B	1	
	Microphone Input	N/A	1
CONTROL I/O	RS-232C	D-Sub 9pin x 1	
	USB	Type B	
Network	Wired Lan	N/A	RJ45 x 1, 100Mbps
	Wireless	ELPAP07	
Wireless Specifications			
Supported Speed For Each Mode ³	IEEE 802.11b: 11 Mbps, IEEE 802.11g: 54 Mbps, IEEE 802.11n: 130 Mbps		
Wireless Lan Security	WPA/WPA2-Personal (with optional Wireless LAN Unit)		
Operating Temperature			
	5 - 35 °C <41 - 95 °F> (0m / 0ft - 2,286m / 7,500ft)		
	5 - 30 °C <41 - 86 °F> (over 2,286m / 7,500ft)		
	(20% - 80% humidity, unfrozen)		
Operating Altitude			
	0 - 3,000 m <0 - 9,843 ft> (over 1,500m / 4,921ft: with high altitude mode)		
Direct Power On / Off	Yes		
Start-Up Period	About 5 seconds, Warm-up Period: 30 seconds		
Cool Down Period	Instant Off or 0 second		
Air Filter	Type	Normal (ELPAF32)	
	Maintenance Cycle	3,000 hours ⁴	
Power Supply Voltage	100 - 240 V AC ±10%, 50/60 Hz		
Power Consumption (220 - 240V)			
Lamp On (Normal / Eco)	273W / 204W	287W / 215W	
Standby (Network On / Off)	3.1W / 0.29W		
Dimension Excluding Feet (D X W X H)	244 x 297 x 87 mm		
Weight	2.5kg	2.7kg	
Fan Noise (Normal / Eco)	37dB / 29dB		

¹ Lamp life will vary depending upon mode selected, environmental conditions and usage. Lamp brightness decreases over time.

² Colour brightness (colour light output) and white brightness (white light output) will vary depending on usage conditions. Colour light output measured in accordance with IDMS 15:4; white light output measured in accordance with ISO 21118.

³ Maximum speed and range is achievable when used with same enhanced mode technology. Actual data rates, features and performance may vary depending on your computer system, the environment and other factors.

⁴ When used in the general office environment (the amount of floating dust: 0.04 - 0.2 mg/m³). Based on the Epson's in-house test results. 25°C (77°F).

Supplied Accessories

- Power Cable: 1.8m
- Computer Cable (VGA Cable): 1.8m
- Remote Control: Yes, with Alkaline AA Battery x 2
- Cable Cover: Attached
- Bundled Software: Projector Software (CD-ROM)
- User's Manual Set: CDROM
- Soft Carrying Case: ELPKS67

Optional Accessories

- Spare Lamp: ELPLP78
- Air Filter: ELPAF32
- Wireless LAN Adaptor: ELPAP07
- Quick Wireless Connection USB Key: ELPAP09
- Ceiling Mount: ELPMB23

EB-S21



EB-97



©2013 Epson Singapore Pte Ltd. All Rights Reserved. Reproduction in part or in whole, without the written permission from Epson, is strictly prohibited.

EPSON and EXCEED YOUR VISION are registered trademarks of Seiko Epson Corporation.

All other product names and other company names used herein are for identification purposes only and are the trademarks or registered trademarks of their respective owners.

Epson disclaims any and all rights in those marks. Projected images shown herein are simulations. The actual product design and contents may vary. Specifications are subject to change without notice and may vary between countries. Please check with local Epson offices for more information.

Apple, iPad and iPhone are trademarks of Apple Inc., registered in the U.S. and other countries. App Store is a service mark of Apple Inc.

Android is a trademark of Google Inc.

Information correct as at September 2013