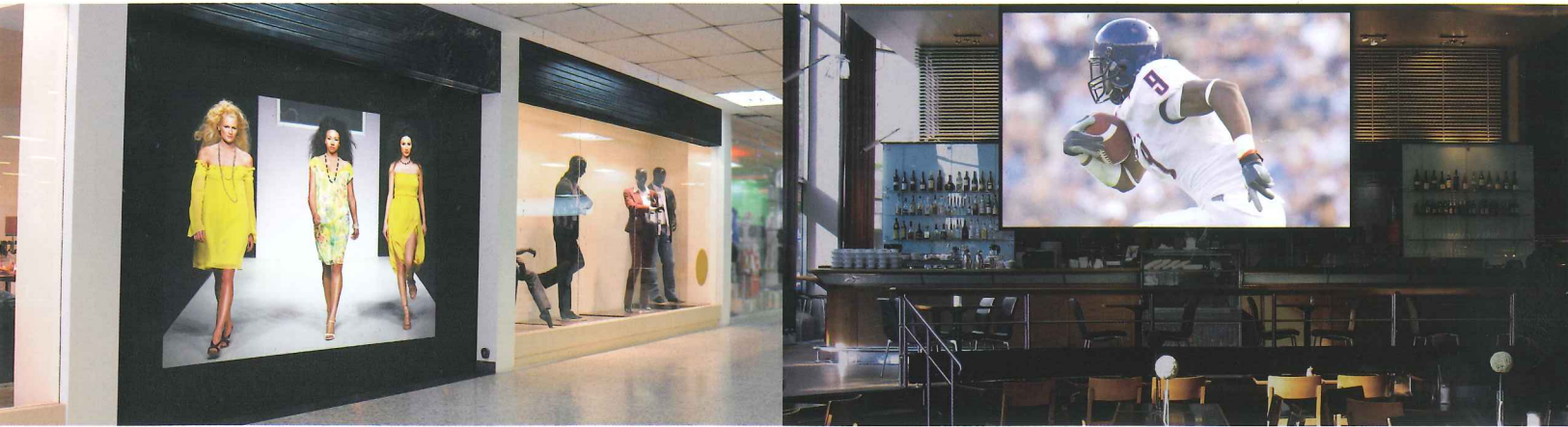


CASIO®



LampFree™ & 6500lm

Heavy-duty specification for high-power, full-time applications



Featuring a hybrid laser & LED light source

Dual Projection System

Extremely bright projection equivalent to 6,500 lumens*

Newly developed geometric correction box provides easy projector stack adjustment.

* XJ-SK650

Advanced geometric correction technology

Provides image correction for projection at an angle or onto round pillars.

Long-life light source good for around 20,000 hours

Reduces maintenance workload and costs significantly.



<http://www.casio.com/>

Featuring a hybrid laser & LED light source Dual Projection System

XJ-SK650/XJ-SK600/YA-S10



Stacked projection gives excellent brightness up to 6,500 lumens.

Two stacked projectors project overlapping images onto a single screen. This provides extremely bright projection up to 6,500 lumens, roughly twice the level provided by a single projector. The result is sharper and brighter projection, even when a large screen is used in venues such as restaurants, store windows, pubs and sports bars.

Geometric correction function allows easy image alignment.

You can project the built-in Guide feature and adjust any image distortion using the remote control, so it's easy to align images accurately during stacked projection. In addition to flat-surface compensation for projection at an angle, projection can also be corrected for curved surfaces using free-form surface compensation with a lattice of up to 81 grid points.

Featuring a long-life light source to minimize maintenance labor and costs

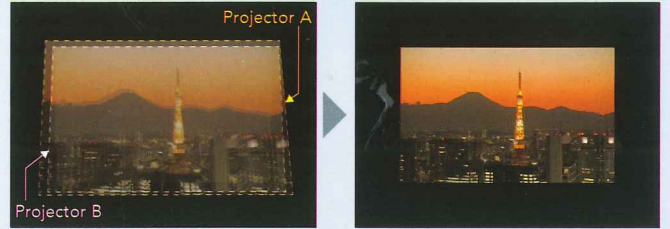
The system is equipped with Casio's own hybrid laser & LED light source that has an estimated life of 20,000 hours. This means huge reductions in running costs and the time spent on maintenance when compared with a high-pressure mercury lamp. And because there is only minimal loss of brightness even during long-term use, it is ideal for heavy-duty applications involving very frequent use and long periods of projection.

Geometric Correction Box [YA-S10]

When the geometric correction box is connected, it is no longer just a Dual Projection System. Even with a single projector you can correct the screen image for projection at an angle and onto curved pillars or flat surfaces. The box itself is so compact it takes up hardly any space at all.



Simple correction of image

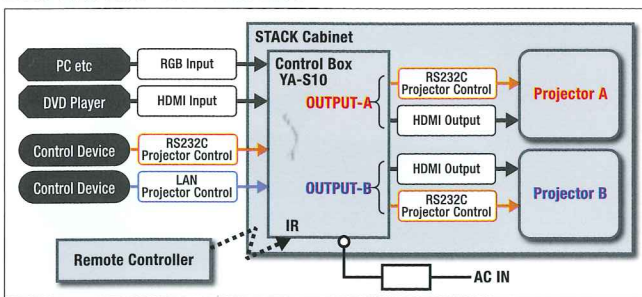


Casio has developed a geometric correction box that corrects and aligns screen images coupled with a unique hybrid laser & LED light source specifically for applications such as signage where high levels of brightness are required. The system also features high-precision correction and an interface that allows easy adjustment from a dedicated remote control for highly detailed image adjustment.

Specifications

Model	XJ-SK650	XJ-SK600
Components	Projector: XJ-H2600 x 2pcs Geometric Correction Box: YA-S10 Stack cabinet set	Projector: XJ-M250 x 2pcs Geometric Correction Box: YA-S10 Stack cabinet set
Brightness	Approx. 6,500 ANSI Lumens	Approx. 6,000 ANSI Lumens
Resolution	Approx. 1,280 x 800 (WXGA)	
Light Source	Laser & LED Hybrid	
Life Time	20,000 hours	
Optical Specs.	Optical Zoom Ratio	1.2 : 1
	Throw Distance (at 80in.)	2.8m (WIDE) - 3.35m (TELE)
	Image Size	50 - 300in.
Control Box Interface	Computer & AV Input	Computer/YCbCr x 1 HDMI x 1
	Output (to Projector)	HDMI x 2 (A/B)
	Input Resolution	Computer: up to 1,600x1,200 60Hz YCbCr: up to 1080p 60Hz HDMI: up to 1080p 60Hz
	Image Adjustment Function	Brightness/Contrast/RGB Color Balance/Color Mode
Geometric Correction	Audio Input & Output	HDMI (embedded)
	Control (RS232C/LAN)	YES
	Correction Type	Flat/Cylinder/Free Style
	Geometric Correction Function	Corner/Side(Arch)/Side(Parallel Shift)/Center Point/Cylinder/Point
System Function	Display Stacking	YES
	Multi Display Edge Blending	Non-Compliant
	Key	10Keys(POWER/INPUT/AUTO/ENTER/ESC/MENU/ ↑ / ← / → / ↓ /)
System Function	Remote Controller	YES for YA-S10 only, ID for Power Key (4ch)
	Direct Power ON	YES
	Auto Power OFF	YES
	ECO Mode	Off(Bright/Normal) ON(Eco1)
	Audio Mute	YES
	Display Blank & Freeze	YES
	D-Zoom	Non-Compliant
	Volume	YES
	Aspect Ratio Control	RGB,HDMI(PC) : Normal/Full Component,HDMI(DTV) : Normal/Full/16:9/Letter BOX
	Logo Capture	YES
3D	Non-Compliant	
Language	18(English/French/German/Italian/Spanish/Swedish/Portuguese/Dutch/Norwegian/Polish/Finnish/Czech/Turkish/Russian/Chinese(Simplified)/Chinese(Traditional)/Korean/Japanese	

XJ-SK650/SK600 Interface



Safety precautions

Read the instruction manual carefully before using these products to ensure safe use.

Warning: Do not use a power source voltage, connection cord or AC adapter other than those specified. Doing so could result in fire or electric shock.

Caution: Do not position these products in a place where they might come into contact with water, moisture, steam, dust or oily smoke or in a high-temperature location. Doing so could result in fire, electric shock or equipment failure.

•Contact a nearby dealer for inquiries concerning this catalogue. If you have questions your dealer cannot answer, inquire at the contact address shown below. •Be sure you receive your warranty with the date of purchase, dealer name and other required items filled in at the time of purchase. •The specifications, designs, etc., presented in this catalogue are subject to change without notice. The colour tones of the products shown may differ from those of the actual products due to printing. •Screen images shown are superimposed graphics. •Product prices do not include installation fees, shipping charges, incidental work, costs, etc. •Be sure to set up the equipment properly according to the directions in the instruction manual. Failure to make connections properly or attempts to make alterations may result in accidents. CASIO can accept no responsibility under such circumstances. •The figures for brightness are averages for the products as a whole at the time of shipment and are in compliance with the ISO2118-2005 Data Projector Specifications. The measurement method and conditions are based on Appendix 2. •These devices comply with the current JIS C 61000-3-2 harmonic standard. •These devices are Class 1 laser products that comply with the IEC60825-1 standard.

•DLP and the DLP medallion logo are registered trademarks of Texas Instruments of the United States. Digital Light Processing is a trademark of Texas Instruments of the United States. •Windows and Windows Vista are registered trademarks of Microsoft Corporation of the United States in the United States and/or other countries. •XGA is a registered trademark of International Business Machines Corporation of the United States. •The HDMI Logo and High-Definition Multimedia Interface are trademarks or registered trademarks of HDMI Licensing, LLC. •MobiShow is a registered trademark of Awind Inc. of Taiwan in Taiwan and other countries and regions. •Macintosh, Mac and Mac OS are registered trademarks of Apple Inc. in the United States and other countries and regions. •Other company or product names in this catalogue are either trademarks or registered trademarks of their respective owners.

<http://world.casio.com/>