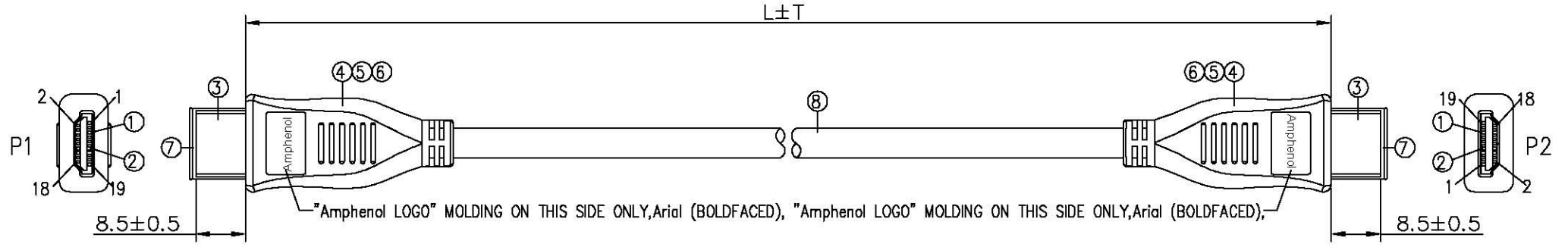


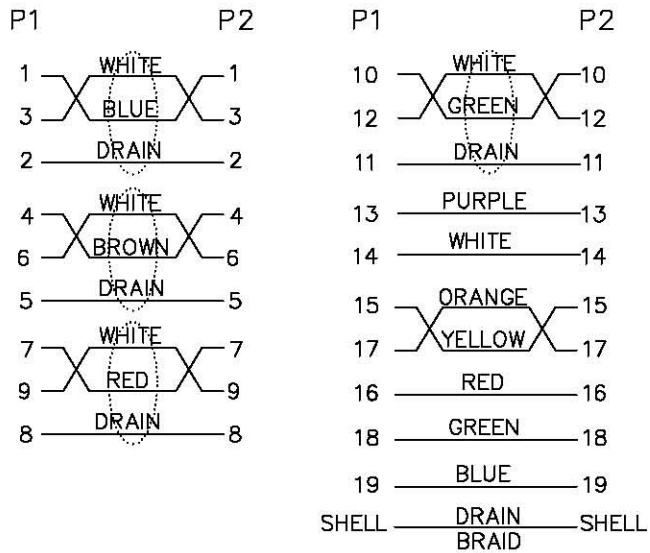
BY	CHK	REVISION RECORD MODIFICATIONS	DATE	REV.
FC	YH	RELEASE TO PRODUCTION	2013.08.21	1.0



HDMI 19PIN MALE(MOLDING TYPE)



PIN OUT



REFERENCE TABLE:

WWC P/N.	CUSTOMER P/N.	L±T(mm)	W±T(mm)	W1(mm)
AAWW1-053-10000		10000±100	210±10	50MAX
AAWW1-053-15000		15000±150	210±10	65MAX
AAWW1-053-20000		20000±200	210±10	75MAX

9	MINI TIE	PE/BLACK IN COLOR	2	
8	CABLE	CABLE SPEC DETAIL SEE CHART A	1	
7	HDMI 19P/M-DUST COVER	MOLDING PE, TRANSPARENT IN COLOR	2	
6	HDMI 19P/M-OUTER MOLD	MOLDING PVC, BLACK IN COLOR	2	
5	WRAPPING PAPER+COPPER FOIL	FIRST WRAP PAPER, THEN WRAP COPPER FOIL, AND THEN, MUST BE 360 DEGREE SOLDER.	2	
4	HDMI 19P/M-INNER MOLD	MOLDING PE/NATURAL	2	
3	HDMI 19P/M-FRONT IRON SHELL	STEEL/GOLD PLATED	2	
2	HDMI 19P/M-INSULATOR	THERMOPLASTIC/BLACK UL94V-0	2	
1	HDMI 19P/M-CONTACT	BRASS/GOLD PLATED, SOLDER TYPE.	38	
NO.	PARTS NAME	STANDARD SPECIFICATION	Q'TY	SUPPLIER

MATERIAL LIST

APPRO	CHECK	DRAWN	PART NO.			
		黄帝	WWC P/N.	AAWW1-053-XXXXX		
			DRAW NO.	DAWW1-053		
			UNIT	mm	SCALE	no
			TOLER		NO.	

DESCRIPTION  
HDMI 19PIN MALE TO  
HDMI 19PIN MALE

**Amphenol**